



East elevation as proposed  
Scale 1:200



North elevation (to Buckshaw Avenue) as proposed  
Scale 1:200



West elevation (to car park) as proposed  
Scale 1:200



South elevation (to car park) as proposed  
Scale 1:200

**Elevations as proposed**  
Scale 1:200 @ A3

**Material specification**  
**Walls**  
**Facing brick** - Dark red, wire cut, multi rustic facings.  
**Brick pinn** - Dark blue engineering brick.  
**Cladding** - Light blue rockpanel cladding (RAL 250 50 10)  
**Profiled steel cladding** (false elevations) - Composite, profiled steel, plasticol embossed cladding. Colour westwood blue (19C-37)  
**Render** - Off white, rough cast, through coloured render

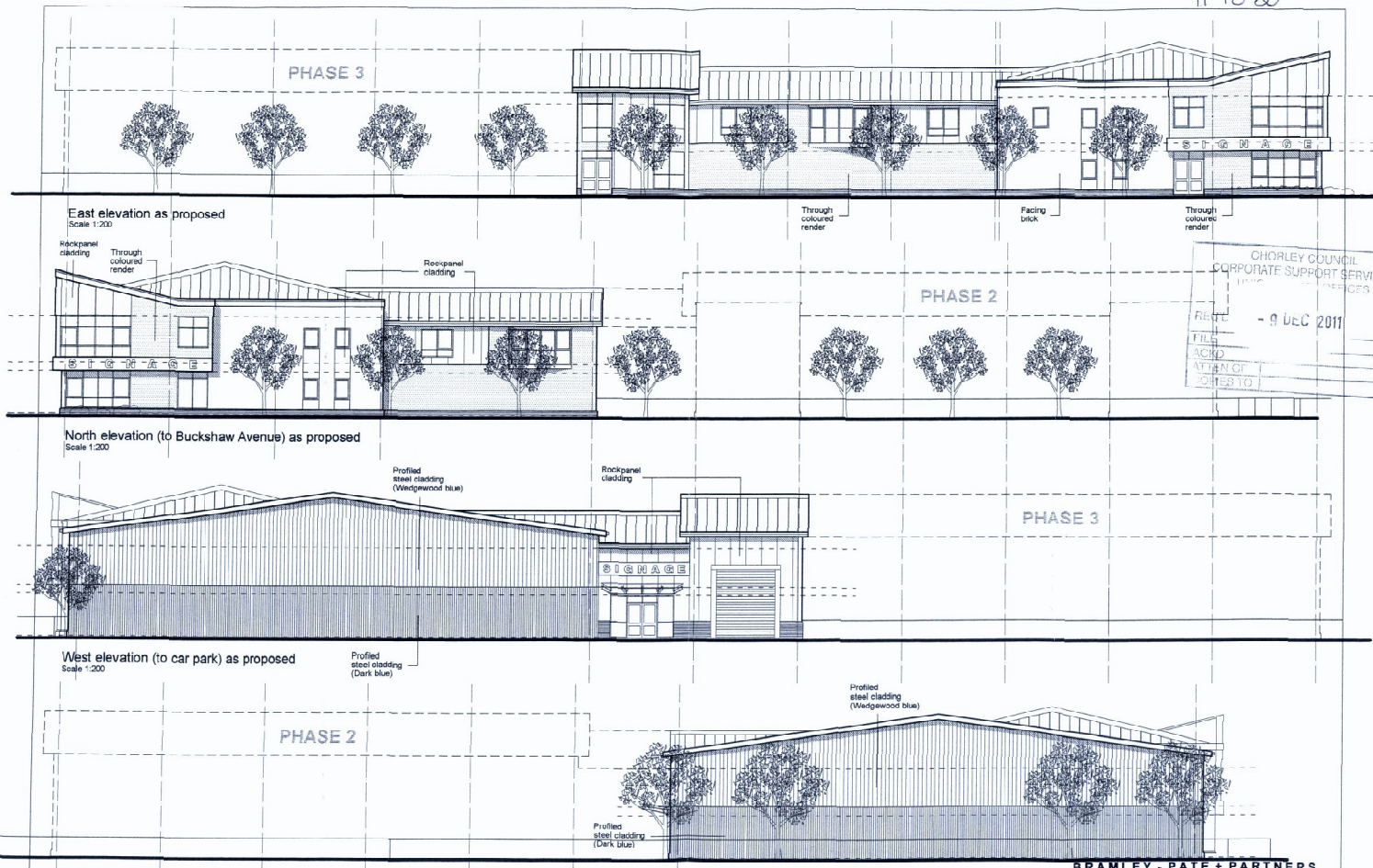
**Windows**  
 Aluminium framed double glazed units.  
 Colour grey (RAL 000 50 03).  
**Roof**  
 Composite, profiled steel, plasticol embossed roof cladding panels.  
 Colour merlin grey (19E26).

**Rainwater goods**  
 Aluminium - polyester powder coated gutters and downpipes.  
 Colour umbra gray (RAL 7022).

**BRAMLEY - PATE + PARTNERS**  
 Chartered Architects Telephone (011772) 336367

LAND OFF BUCKSHAW AVENUE, CHORLEY - PROPOSED BI/ES UNIT.	28/11/2011
FOR MR SIMON GOUGH	JOB No. 2613
1:200	SK/0/3

11 10 80



CHORLEY COUNCIL  
CORPORATE SUPPORT SERVICES  
11/10/2011  
RECEIVED  
- 9 DEC 2011  
FILE  
ARCH  
ATTN: G  
POSTED TO

South elevation (to car park) as proposed  
Scale 1:200  
**Elevations as proposed - PHASE 1**  
Scale 1:200 @ A3

**Material specification**  
**Walls**  
Facing brick - Dark red, wire cut, multi rustic facings  
Brick silted - Dark blue engineering brick  
Cladding - Light blue rockpanel cladding (RAL 250 50 10)  
Profilled steel cladding (folar elevations) - Composite, profilled steel, plastic embossed standing. Colour wedgewood blue (16C27)  
Render - Off white, rough cast, through coloured render.

**Windows**  
Aluminium framed double glazed units.  
Colour grey (RAL 9005/50 05)  
**Roof**  
Composite, profilled steel, plastic embossed 100' cladding panels.  
Colour merlin grey (19325).

**Rainwater goods**  
Aluminium, polyester powder coated gutters and downpipes.  
Colour: unibre grey (RAL 7022).

**BRAMLEY - PATE + PARTNERS**  
Chartered Architects - Telephone (01772) 335357  
LAND OFF BUCKSHAW AVENUE, CHORLEY - 28/11/2011  
PROPOSED B1/B6 UNIT. JOB No. 2613  
FOR MR SIMON GOUGH 1:200 SK/D/L